

*Supco*

# ***VISION SERIES***

## **Logger**



The Vision Series Logger is a feature packed logger, strip recorder, and alarm device with programmability for each. The easy to follow menu driven programming, large digital display, PC Interface capabilities without additional software and remote alarm/dialer connection give this device features found on products costing much more.

### **VLT Temperature Data Logger Recorder**

#### **Features:**

- Monitoring, logging, printing and display temperature vs. time.
- Adjustable sampling rate: 1 thru 90 minutes
- Menu driven preference programming via front panel keys
- Data & settings retained after power failure,
- F° or C°, date format: dd/mm/yy or mm/dd/yy
- 290 Historical data readings - can be printed on request any time
- Real time temperature printing - 3 printing modes
- Printing 11 characters: ID number, time, temperature, alarm status
- On line temperature display/minimum or maximum on request
- Adjustable high & low alarm thresholds - adjustable alarm delay
- Audio/visual build in alarm, normally open contacts for remote application
- RS-232 port for exporting real time data to PC - No Software needed
- Low battery, chart ending and no sensor indicators
- Extendable remote sensor

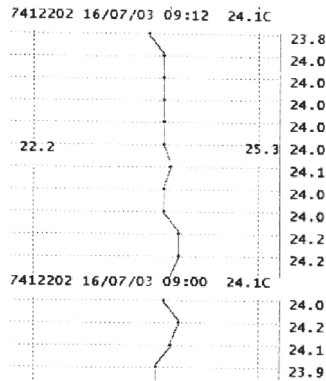
**SEALED UNIT PARTS CO., INC.**

PO Box 21, 2230 Landmark Place, Allenwood, NJ USA  
732-223-6644 • Fax 732-223-1617  
www.supco.com • info@supco.com



## Print Modes:

### Graph



### Large Font Text

08:49 24.2C  
 08:48 24.3C  
 08:47 25.6C AL  
 08:46 26.0C AL  
 08:45 28.6C AL  
 08:44 29.9C AL  
 08:43 29.0C AL  
 08:42 24.1C

### Small Font Text

7412202 16/07/03 08:29 25.4C  
 7412202 16/07/03 08:24 25.5C  
 7412202 16/07/03 08:23 25.5C  
 7412202 16/07/03 08:22 25.7C  
 7414321 16/07/03 08:21 25.8C  
 7654321 01/01/01 01:32 25.7C  
 7654321 01/01/01 01:31 25.7C  
 7654321 01/01/01 01:30 25.8C  
 7654321 01/01/01 01:30 25.7C  
 7654321 01/01/01 01:29 25.8C  
 7654321 01/01/01 01:28 26.0C  
 7654321 01/01/01 01:27 25.9C  
 7654321 01/01/01 01:26 26.0C

## Specifications

Ambient Operating Temperature Range	0°F to +150°F (-18°C to +65°C) non-condensing
Ambient Operating Relative Humidity	0 to 95% non-condensing (IP65)
Temperature Measure Range	-40°F to +266°F (-40°C to 130°C)
Temperature Measure Accuracy	+/-1.8°F (+/-1°C)
Temperature Writing & Storage resolution	0.2°F (0.1°C)
Storage Temperature Range	-40°F to +150°F (-40°C to +65°C)
Temperature Sensor (extendible)	33' long sensor probe wire, 0.2" diameter
Alarms (programmable)	High & Low, End of paper, No sensor, Audio/visual/normally open contact
Alarm delay range	User selectable: No delay, 10 min., 30 min., 1 hr, 2 hrs
3 Printing Modes	Full text report (small font) /time & temp. (large font)
Chart Speed Accuracy	+/-1%
Time Accuracy	+/-80ppm @ 75°F (24°C)
Thermal Chart Paper Width	2" chart (2" wide, 131' long) (2 rolled charts supplied)
Display	Numeric LED display, 4 characters
Primary Power	115 VAC, 50/60Hz optional (230 VAC, 50/60Hz)
Alternative Power	12 Volt AC/DC
Logger Battery Back-up	9 volt battery (for logging 50 hours) not included
Clock, setting Battery	3.6 volt lithium battery, 2 years in average use (supplied)
Mounting	Vertical or horizontal - Free standing, wall or panel mount
Case size	8.2" X 5.3" X 2.7" (208.6 mm X 135 mm X 69 mm)

### Included Accessories

- 2 Thermal Chart Paper Rolls, 1 installed (P/N VLPAPER)
- 1 Sensor, 33' long extendable (P/N VLSENSOR)
- Power Adapter 115 Volt to 24 Volt (P/N VL115)
- User Manual
- 3.6 lithium battery (P/N VLBAT)
- Wall mount bracket

### Optional Accessories

- RS232 Communication Cable (P/N 13495)
- Replacement Sensor (P/N VLSENSOR)
- Sensor Extensions (P/N CABLE10H)
- Water Proof Case (VLCASE)
- Remote Alarm Silencer Kit (P/N VLISK)
- Thermal Chart Paper Roll (P/N VLPAPER)
- Power Adapters: 115 volt (P/N VL115)  
220 volt Europe (P/N VL220)
- Vehicle Power Reducer 24 VDC to 12 VDC (P/N VPR)
- Waterproof case with clear hinged cover (P/N VLWPCASE)

**SEALED UNIT PARTS CO., INC.**

PO Box 21, 2230 Landmark Place, Allenwood, NJ USA

732-223-6644 • Fax 732-223-1617

www.supco.com • info@supco.com

F331-0304